



DAMEN STAN TUG® 1405

"PORTO VADO VII"

GENERAL

| | |
|-----------------|---|
| YARD NUMBER | 503703 |
| DELIVERY DATE | October 2006 |
| BASIC FUNCTIONS | Towing, mooring and pushing operations |
| CLASSIFICATION | RINA C ✕ HULL ✕ MACH TUG Coastal Area Operation service within six miles from shore |
| REGULATIONS | Italian Flag state Authority |
| FLAG | Italy |
| OWNER | Transmare s.n.c., Italy |

DIMENSIONS

| | |
|----------------|----------|
| LENGTH O.A. | 14.55 m |
| BEAM O.A. | 5.03 m |
| DEPTH AT SIDES | 2.05 m |
| DRAUGHT AFT | 1.70 m |
| DISPLACEMENT | 53.0 ton |

TANK CAPACITIES

| | |
|----------|--------------------|
| FUEL OIL | 6.9 m ³ |
|----------|--------------------|

PERFORMANCES (TRIALS)

| | |
|--------------------|------------|
| BOLLARD PULL AHEAD | 7.6 ton |
| SPEED | 10.0 knots |

PROPULSION SYSTEM

| | |
|---------------|---|
| MAIN ENGINES | 2x Caterpillar 3406C TA/B |
| TOTAL POWER | 448 bkW (601 bhp) at 1800 rpm |
| GEARBOXES | Reintjes WAF 144L / 3.522:1 |
| PROPELLERS | Bronze fixed pitch propeller |
| NOZZLES | Van de Giessen 2x 1000 mm with stainless steel innerrings |
| STEERING GEAR | Powered hydraulic 2x 45°, rudder indicator |

AUXILIARY EQUIPMENT

| | |
|----------------|---|
| BILGE PUMP | Sterling VW20, 24 m ³ /hr |
| WATER SYSTEM | Electrically driven pressure set |
| COOLING SYSTEM | Fresh water through closed cooling channels |

DECK LAY-OUT

| | |
|------------------|------------------------------------|
| ANCHORS | 105 kg Pool (HHP) and 105 kg spare |
| CHAIN | 110 m, Ø 13 mm, shortlink Q2 |
| ANCHOR/TOW.WINCH | 10.6 m/min, 1.3 ton |
| TOWING HOOK | Mampaey, 7,1 ton S.W.L. |
| PUSHBOW | Cylindrical rubber fender Ø 380 mm |
| TOWING BITT | Double pole |

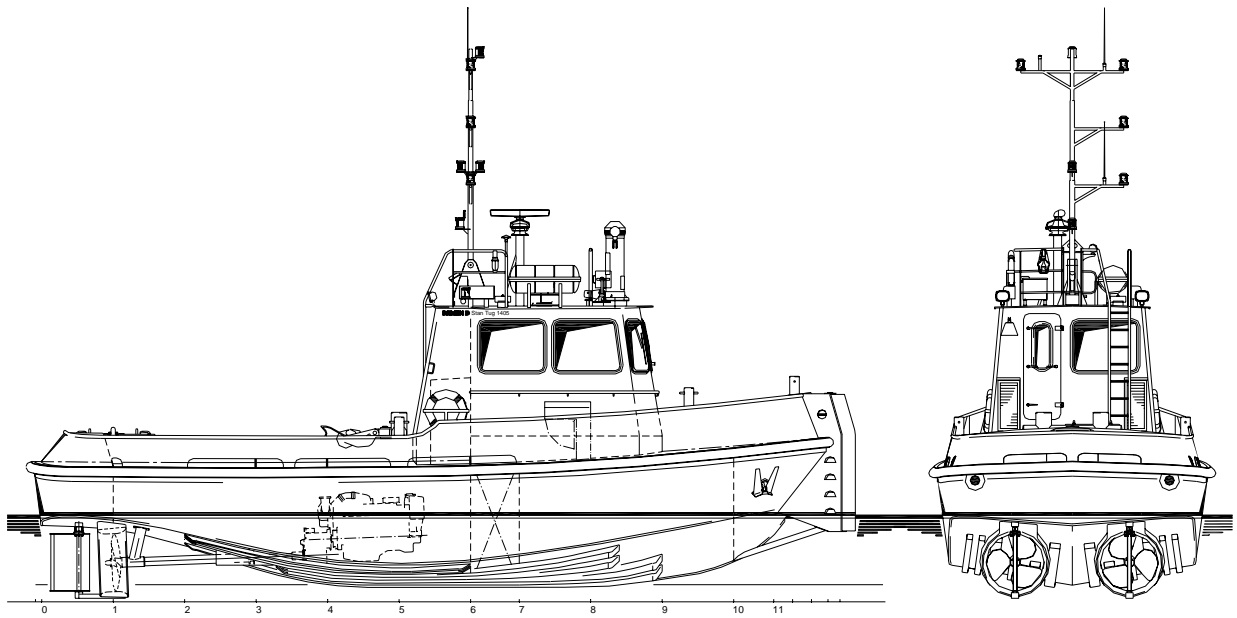
ACCOMMODATION

The wheelhouse ceiling is insulated with mineral wool and panelled. The wheelhouse floor is covered with rubber/synthetic floor covering, make Bolidt, colour "blue". The wheelhouse has one helmsman seat and a 2-person bench and table with chair. Below deck a store with two lockers and a toilet space are arranged.

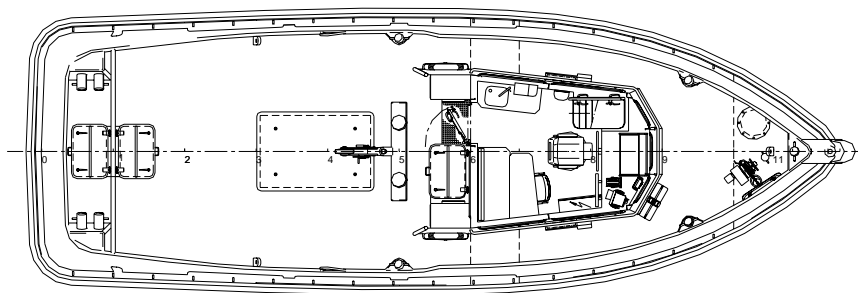
NAUTICAL AND COMMUNICATION EQUIPMENT

| | |
|-------------------|---|
| RADAR SYSTEM | Furuno 1932 |
| SEARCHLIGHT | Pesch 250 W 24 V |
| COMPASS | Cassens & Plath, Magnetic Kotter type |
| GPS | Furuno GP-150 |
| ECHOSOUNDER | Furuno FE-700 |
| VHF/DSC | Sailor RT5022, 25 W |
| NAVIGATION LIGHTS | Navigation lights incl. towing and R.I.M.. lights |

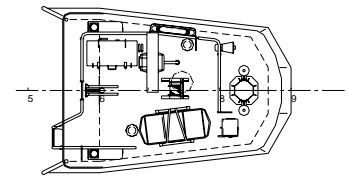
DAMEN



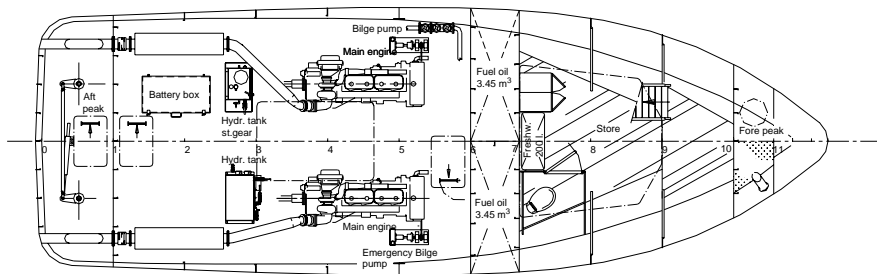
Maindeck



Topdeck



Below Maindeck



DAMEN STAN TUG[®] 1405

"PORTO VADO VII"

DAMEN

DAMEN SHIPYARDS GORINCHEM

Member of the DAMEN SHIPYARDS GROUP



Industrieterrein Avelingen West 20
4202 MS Gorinchem

P.O. Box 1
4200 AA Gorinchem
The Netherlands

phone +31 (0)183 63 99 11
fax +31 (0)183 63 21 89

info@damen.nl
www.damen.nl